

客户: 型号: ZK900031-W10 部件: 车件 镀金30迈

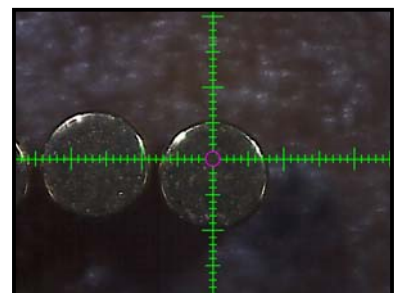
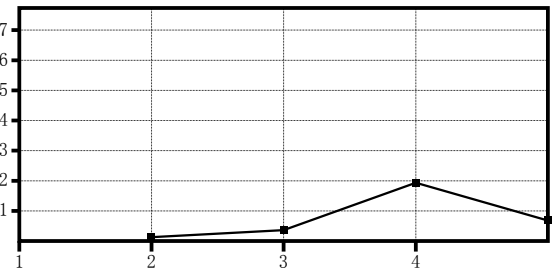
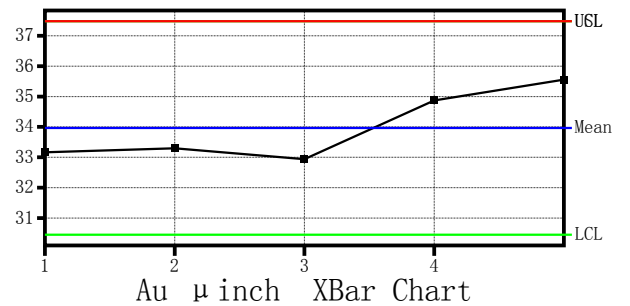
No	Au μ inch	Ni μ inch
1	33.167	70.630
2	33.299	74.782
3	32.936	87.936
4	34.873	57.138
5	35.556	63.891

Application : Au/Ni//Brass

Data No	5	5
Max	35.556	87.936
Min	32.936	57.138
Range	2.620	30.798
Mean	33.966	70.875
Std. Dev.	1.172	11.661
CV%	3.451	16.452

2020/2/29

11:34



欧小梅